



## Controlled permeability formwork liner for high quality durable concrete surfaces

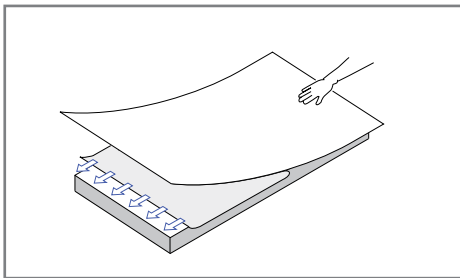
### Uses

Zemdrain® MD self-adhesive is an addition to the range of Zemdrain® controlled permeability formwork liners which includes Zemdrain® MD.

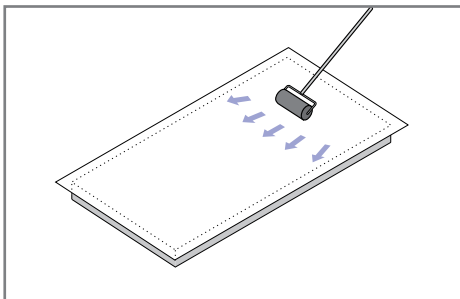
Zemdrain® MD self-adhesive can be used with all formwork but is particularly suited for special applications including:

For steel or plastic forms where stapling is very difficult or impossible

- For formwork with specific geometrical shapes
- For aesthetic concrete where staple marks are unacceptable
- For small-sized formwork panels



Keep material square on the form, remove protective backing, gently press the liner against the form



Firmly fix in position by applying a uniform pressure to the surface using a special roller

### Concrete surface quality

Precise, computer-controlled application of the PSA-glue\* on the rear side of the formliner ensures that water draining channels in the grid remain unimpeded. The glued surface is covered with protective backing, which is simply removed prior to the application; the formliner can thus simply be glued to the formwork.

During concreting water and air are drained as usual. Using the well proven Zemdrain® formliner, the usual surface concrete quality will thus be produced.

### Technical Support

Parchem offers a technical support package to specifiers, end-users and contractors, as well as on-site technical assistance.

### Properties

- Zemdrain® MD self-adhesive is manufactured from polypropylene.
- Upper surface (concrete face): smooth to slightly textured filter fabric (PP)
- Rear side (form work): with special grid (PP) and adhesive
- Adhesive type:PSA (\*Pressure Sensitive Adhesive) made of thermoplastic polymers
- Separating film: LDPE, with silicone coating on one side
- Multiple use: 2-3 times possible dependant upon handling
- High water/air storage volume, thus also suited for inclined and horizontal surfaces

### Supply

Roll width:	2.50 m
Roll length:	35.0 m
Roll thickness:	2.2 mm thick
Roll weight:	59 kg

### Coverage

87.5 m<sup>2</sup> per roll

### Quality convinces

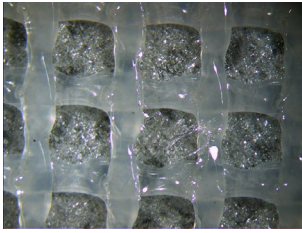
The general requirements of the 'Zemdrain® Application Guidelines' (version dated January 2011) remain applicable for Zemdrain® MD self-adhesive. However, instructions relating to tensioning and fixing using staples are now superseded by the fixing instructions applicable only for Zemdrain® MD self-adhesive.

All test reports issued for Zemdrain® MD also apply for the formliner Zemdrain® MD self-adhesive (except for test reports and safety data sheets for drinking water applications).

Prior to using Zemdrain® MD self-adhesive please clarify all technical details with our sales representatives or our technical department. Phone 1300 737 787

# Zemdrain® MD self-adhesive

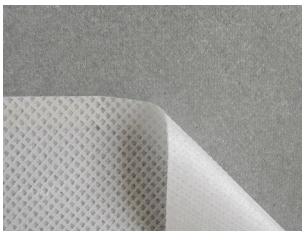
---



Grid Structure (Rear side) after adhesive application



Zemdrain® MD self-adhesive fixed to the formwork



Concrete surface produced with Zemdrain® MD self-adhesive

## Important notice

A Safety Data Sheet (SDS) and Technical Data Sheet (TDS) are available from the Parchem website or upon request from the nearest Parchem sales office. Read the SDS and TDS carefully prior to use as application or performance data may change from time to time. In emergency, contact any Poisons Information Centre (phone 13 11 26 within Australia) or a doctor for advice.

## Product disclaimer

This Technical Data Sheet (TDS) summarises our best knowledge of the product, including how to use and apply the product based on the information available at the time. You should read this TDS carefully and consider the information in the context of how the product will be used, including in conjunction with any other product and the type of surfaces to, and the manner in which, the product will be applied. Our responsibility for products sold is subject to our standard terms and conditions of sale. Parchem does not accept any liability either directly or indirectly for any losses suffered in connection with the use or application of the product whether or not in accordance with any advice, specification, recommendation or information given by it.

