

## Waterproofing tape for construction joints and cracks

### Uses

Vandex Construction Joint Tape, in combination with Vandex BB 75E-Z or Cemelast flexible waterproofing slurry, forms an excellent and durable seal of construction joints and cracks, in damp concrete conditions.

Areas of application: construction joints and cracks.  
Vandex Construction Joint Tape is resistant to: hydrostatic pressure:

- on the positive side
- on the negative side only with appropriate support

On the negative side movement cracks should be routed out first and filled with Vandex Uni Mortar. Water leaks should be waterproofed with Vandex Plug first.

### Advantages

- Economical and safe
- Can be applied onto damp substrate
- Resistant to hydrostatic pressure
- Permanently flexible
- Can be bonded to concrete surfaces with Vandex BB 75E-Z or Cemelast waterproofing slurry
- Simple tape joints bonded with Vandex BB 75E-Z or Cemelast

### Description

Vandex Construction Joint Tape bridges and seals construction joints and cracks in concrete structures.

Vandex Construction Joint Tape is a synthetic rubber strip, approximately 0.7 mm thick. It is covered on both sides with an alkali-resistant and flexible polyester fabric mat, which forms a web on the edges.

The combined properties of the fabric mat and synthetic rubber ensure a strong bond with the concrete surface, maintaining excellent elasticity of the tape.



## Properties

Product Code:	751010
Material:	synthetic rubber
Thickness [mm]:	approx. 0.7
Total width [mm]:	approx. 180
Width of fabric web [mm]:	approx. 30
Roll length:	30m
Elongation at lateral failure:	[%] 260
Water vapour diffusion resistance index:	45'000

All data is averaged from several tests under laboratory conditions. In practice, climatic variations such as temperature, humidity, and porosity of substrate may affect these values.

## Chemical Resistance

Vandex Construction Joint Tape offers resistance to salt solutions, dilute acids and alkali solutions; low resistance to mineral oils, benzenes and strong solvents.

## Technical Support

Parchem offers a comprehensive range of high performance, high quality, flooring, jointing and repair products for both new and existing floor surfaces. In addition, the company offers a technical support package to specifiers, end-users and contractors, as well as on-site technical assistance throughout its own national outlets and via international appointed distributors.

## Application Instructions

### Preparation of substrate

The substrate must be clean, sound and free of any surface contamination. Any unevennesses or holes must be made good. Using standard methods such as chiseling, brushing, wet or dry sandblasting or cutting, remove all loose material, cement laitance, and any contamination back to a sound and clean concrete substrate.

Dust, oil, tar, paint and grease must be removed. Smooth surfaces must be roughened.

Clean all chiselled out areas, shutter-tie holes, etc. and pre-water until the concrete is saturated. Following this, fill the areas with Vandex Uni Mortar in layers, the number depending on the thickness to be filled.

Water leaks must be stopped using Vandex Plug.

### Application

The damp (not wet) substrate must be sound, open-textured, clean and free of oil and grease. Irregularities and surface voids must be made good.



1. Apply a first coat of Vandex BB 75E-Z or Cemelast (3 kg/m<sup>2</sup>, 1.5 mm, mixing instructions as per Technical Data Sheet Vandex BB 75E-Z or Cemelast), at least 1 cm beyond the Vandex Construction Joint Tape.



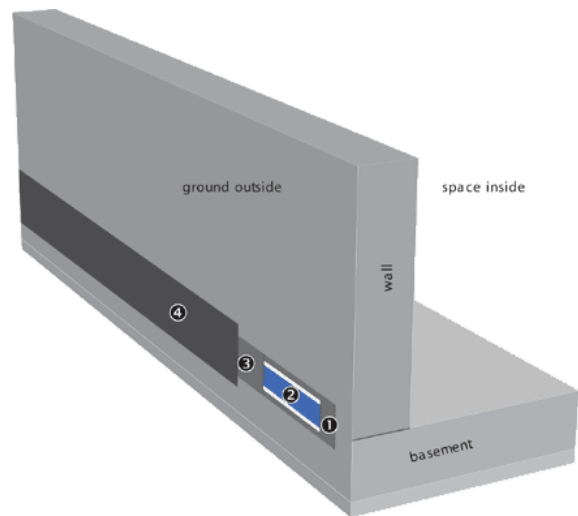
2. Immediately place the Vandex Construction Joint Tape in the freshly applied Vandex BB 75E-Z or Cemelast coat. Then, embed both fabric edges in the Vandex BB 75E-Z or Cemelast mix.



3. Overcoat Vandex Construction Joint Tape with a second coat of Vandex BB 75E-Z or Cemelast (2 kg/m<sup>2</sup>, 1 mm) and smooth the surface with damp brush.

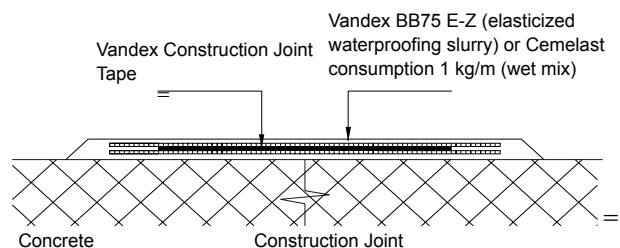


4. Finished state: Provide appropriate protection of the tape if required.



- ① VAN DEX BB 75 E, 1<sup>st</sup> layer
- ② VAN DEX CONSTRUCTION JOINT TAPE
- ③ VAN DEX BB 75 E, 2<sup>nd</sup> layer
- ④ mechanical protection

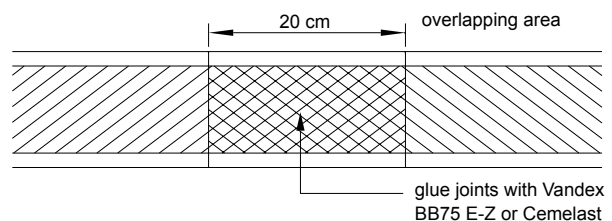
## Cross Section Construction Joint



## Tape Joints

Tape joints, mitre joints and T-joints are bonded using the flexible waterproofing slurry Vandex BB75 E-Z or Cemelast.

At least 20 cm overlap – which is glued with Vandex BB75 E-Z or Cemelast is required in the joint details. The overlapping fabric web must be continuous through all the fitting details.



Internal and external corners are pre-cut. The tape joints or overlaps are glued with Construction Joint Tape with overlapping area at least 5 cm.

# Vandex® Construction Joint Tape

---

## Estimating

### Supply

30 m (in cardboard box)

### Consumption

1 m Vandex Construction Joint Tape 1.0 kg/m

Vandex BB 75E-Z or Cemelast

### Tape Joints

Tape joints, mitre joints and T-joints are bonded using the flexible waterproofing slurry Vandex BB 75E-Z or Cemelast.

At least 20 cm overlap – which is glued with Vandex BB75E-Z or Cemelast – is required in the joint details. The overlapping fabric web must be continuous through all the fitting details.

### Supply

30 m (in cardboard box)

### Storage

When stored dry in unopened, undamaged original packaging shelf life is unlimited (optimum storage conditions: 20°C / 50 % relative humidity).

### Important notice

A Safety Data Sheet (SDS) and Technical Data Sheet (TDS) are available from the Parchem website or upon request from the nearest Parchem sales office. Read the SDS and TDS carefully prior to use as application or performance data may change from time to time. In emergency, contact any Poisons Information Centre (phone 13 11 26 within Australia) or a doctor for advice.

### Product disclaimer

This Technical Data Sheet (TDS) summarises our best knowledge of the product, including how to use and apply the product based on the information available at the time. You should read this TDS carefully and consider the information in the context of how the product will be used, including in conjunction with any other product and the type of surfaces to, and the manner in which, the product will be applied. Our responsibility for products sold is subject to our standard terms and conditions of sale. Parchem does not accept any liability either directly or indirectly for any losses suffered in connection with the use or application of the product whether or not in accordance with any advice, specification, recommendation or information given by it.

