

Trench Mesh Support

Description

The Trench Mesh Support has been designed with the clip-on at both sides to allow the support to be fitted prior to lowering the mesh into the trench. A non clip-on support in the middle allows for tolerances in the main wire spacing of the trench mesh.

The maximum width of 290mm avoids interference with the sides of narrow trenches.

This secure support can accommodate 8, 11, and 12mm bar or mesh, with 60mm cover.

Uses

Residential applications such as strip footings, foundations and raft slabs.

Advantages

- Easy clip on
- Stable
- Secure

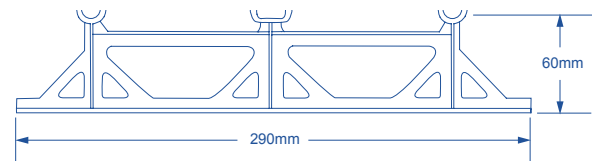
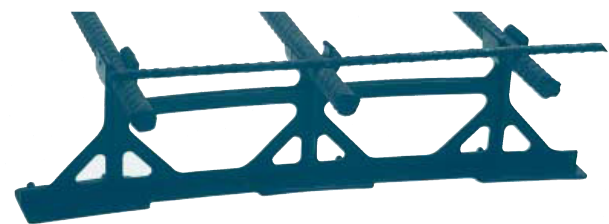
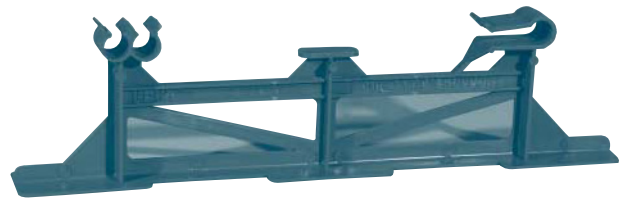
Supply

60mm cover for 8 to 12mm bar or mesh.

Properties

P/Code	Cover	No P/Bag	Mass P/Bag
BCTMS	60mm	25	1 kg

All dimensions nominal.



Trench Mesh Support

Important notice

A Safety Data Sheet (SDS) and Technical Data Sheet (TDS) are available from the Parchem website or upon request from the nearest Parchem sales office. Read the SDS and TDS carefully prior to use as application or performance data may change from time to time. In emergency, contact any Poisons Information Centre (phone 13 11 26 within Australia) or a doctor for advice.

Product disclaimer

This Technical Data Sheet (TDS) summarises our best knowledge of the product, including how to use and apply the product based on the information available at the time. You should read this TDS carefully and consider the information in the context of how the product will be used, including in conjunction with any other product and the type of surfaces to, and the manner in which, the product will be applied. Our responsibility for products sold is subject to our standard terms and conditions of sale. Parchem does not accept any liability either directly or indirectly for any losses suffered in connection with the use or application of the product whether or not in accordance with any advice, specification, recommendation or information given by it.