

# Supercast Jointing Instructions

## Site Jointing Instructions

### EQUIPMENT REQUIRED

- Supercast jointing jig
- 110 V and 220 V, 350 W blades available
- Sharp knife
- Wire brush

### WARNINGS

Ensure that heater blades are earthed by the green/yellow wire, and that the wiring operation is carried out by a competent electrician.

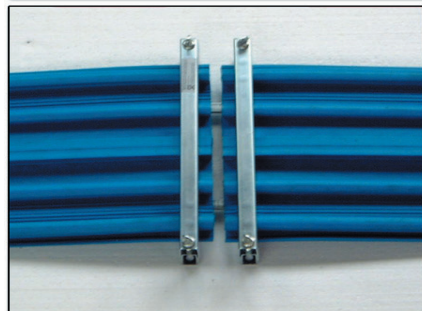
Hot blade. Do not immerse blade in water/liquids.

Check that blade voltage matches supply voltage.

### TRIMMING TO LENGTH

1. Carefully measure the length of waterstop required and add 5 or 6 mm to each mating end to allow for melting of the compound during the heat welding process.
2. Clamp the end to be trimmed into one of the jointing jigs and cut to the required length using the side of the jig as a guide.
3. Repeat this operation for the other mating end.
4. Clamp the two ends into their respective sides of the jointing jig, with approximately 10 mm projecting and engage the guide rods.
5. Plug the welding blade and allow to warm up. Using a small offcut of waterstop, check that the blade reaches a temperature sufficient to melt the PVC.
6. When the blade is at melt temperature, place it on edge on the guide rods of the jig between the mating ends of the waterstop and press the waterstop firmly against either face of the blade until a molten bead of PVC approx 3mm thick appears along the length of the blade. Slide the jig apart, remove the heating blade and push the waterstop back together holding under pressure for a while which allows the molten PVC to fuse together.

7. Unclamp the jigs and carefully remove the joined waterstop taking care not to flex the joint until it has cooled.



# Supercast Jointing Instructions



## ADDITIONAL INFORMATION

Parchem provides a wide range of complementary products which include:

- concrete repair – cementitious and epoxy
- grouts and anchors – cementitious and epoxy
- waterproofing membranes – liquid applied, cementitious and bituminous sheet membranes
- waterstops – pvc and swellable
- joint sealants – building, civil and chemical resistant
- industrial flooring systems – cementitious and epoxy
- architectural coatings
- filler boards – swellable cork, bituminous and backing rod
- ancillary products

For further information on any of the above, please consult with your local Parchem sales office.

## IMPORTANT NOTICE

A Material Safety Data Sheet (MSDS) and Technical Data Sheet (TDS) are available from the Parchem website or upon request from the nearest Parchem sales office. Read the MSDS and TDS carefully prior to use as application or performance data may change from time to time. In emergency, contact any Poisons Information Centre (phone 13 11 26 within Australia) or a doctor for advice.

## PRODUCT DISCLAIMER

This Technical Data Sheet (TDS) summarises our best knowledge of the product, including how to use and apply the product based on the information available at the time. You should read this TDS carefully and consider the information in the context of how the product will be used, including in conjunction with any other product and the type of surfaces to, and the manner in which, the product will be applied. Our responsibility for products sold is subject to our standard terms and conditions of sale. Parchem does not accept any liability either directly or indirectly for any losses suffered in connection with the use or application of the product whether or not in accordance with any advice, specification, recommendation or information given by it.

\*Manufactured and sold under license from Fosroc International Limited. Fosroc and the Fosroc logo are trade marks of Fosroc International Limited, used under license. \*Denotes a trade mark of Fosroc International Limited.



PARCHEM	CONCRETE REPAIR	FLOORING	<b>JOINTING SYSTEMS</b>	WATERPROOFING
<b>TECHNICAL DATA SHEET</b>	<b>JULY 11</b>			
<a href="http://www.parchem.com.au">www.parchem.com.au</a>	7 Lucca Road, Wyong NSW 2259	Phone 1300 737 787		ABN 80 069 961 968
				<b>2</b>