

## Pod spacers & rail

### Pod Star

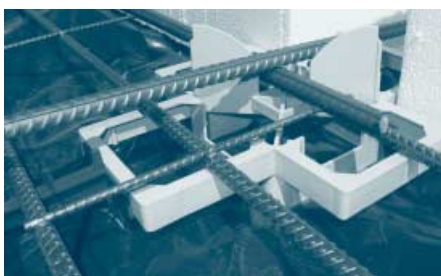
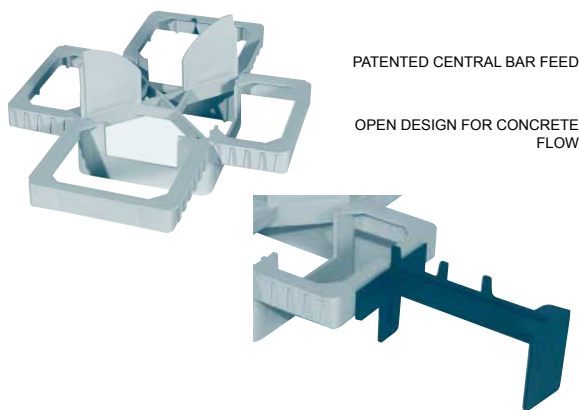
The pod star is a sturdy 4-way spacer that forms a 110mm wide internal beam between polystyrene pods or pods made from other materials. The patented design incorporates an easy central feed system for reinforcing bars in both directions. The supporting frame that holds the pod is 60mm x 85mm and ribbed for better grip. Cover from the bottom of the beam is 50mm.

P/Code	Qty p/bundle/pallet	Mass kg p/100
BPODS	10 / 720	10.0kg

### Pod Star Extension

The extension, clips onto the pod star to form a 270mm or 300mm wide edge beam. This eliminates the need to purchase large, cumbersome components to form the edge beam. Nodules on the upper surface of the extension are designed to locate the longitudinal wires on trench mesh, or loose bars depending on the design. The end nodule will locate the wire or bar a minimum of 45mm from the edge of the beam. Cover from the bottom is also 50mm.

P/Code	Qty p/bundle/pallet	Mass kg p/100
BPODEX105	100/5000	1.6kg



### Pod Rail

The 600mm long pod rail is designed to spread the load of the top reinforcing mesh and maintain integrity of cover over the polystyrene pods. Under load, single bar chairs will compress into or possibly punch through the pods.

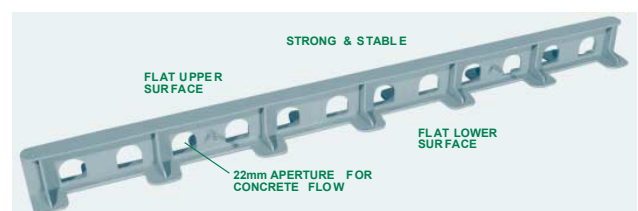
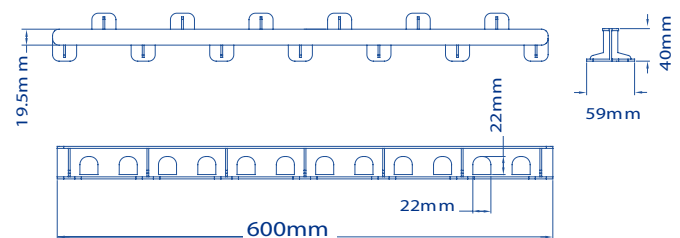
A paper presented at the 2001 CIA Conference in Perth, concludes that the presence of continuous bar chairs does not have a significant effect on the slab strength. Similarly, from fig. 3 of the same paper, it can be seen that the pod rail allows superior concrete flow compared to the continuous chair demonstrated.

Only two rails are required per pod, which are placed when the pods are fixed. The reinforcing mesh is simply lowered onto the rails, without having to "chair up" under each wire.

This method of construction improves productivity substantially and reduces the amount of bending by the concreter or steel fixer.

A minimum bottom cover of 40mm is maintained.

P/Code	Qty p/bundle/pallet	Mass kg p/100
BPODR 40	25/2000	11.7



# Pod Spacer & Rail

---

## **Important notice**

A Safety Data Sheet (SDS) and Technical Data Sheet (TDS) are available from the Parchem website or upon request from the nearest Parchem sales office. Read the SDS and TDS carefully prior to use as application or performance data may change from time to time. In emergency, contact any Poisons Information Centre (phone 13 11 26 within Australia) or a doctor for advice.

## **Product disclaimer**

This Technical Data Sheet (TDS) summarises our best knowledge of the product, including how to use and apply the product based on the information available at the time. You should read this TDS carefully and consider the information in the context of how the product will be used, including in conjunction with any other product and the type of surfaces to, and the manner in which, the product will be applied. Our responsibility for products sold is subject to our standard terms and conditions of sale. Parchem does not accept any liability either directly or indirectly for any losses suffered in connection with the use or application of the product whether or not in accordance with any advice, specification, recommendation or information given by it.