

Aluminium strips for sealing and flashing the edge of Index sheet membranes

Uses

Parchem Pressure Seal Flashing is used to seal and flash the edge of Index torch applied bituminous membrane range of products and Emer-Proof HDPE and HD self-adhesive sheet membranes.

The flashing strip is mechanically fixed, (with 150mm spacing between fixings), with the top edge sealed with a high performance, flexible sealant such as Emer-Seal MS or bituminous mastic, such as Nitoseal MB175 (formally Plastiseal).

Advantages

- Mechanically fixed through the membrane preventing the membrane from slumping
- Grooved in the centre of the strip for locating the drill
- Sold separately

Description

Extruded aluminium strips designed specifically for sealing and flashing the edge of Index torch applied sheet membranes and Emer-Proof HDPE and HD self-adhesive sheet membranes.

This pressure seal was designed in-house at Parchem for the specific purpose of sealing off the Index bituminous torch applied membrane range and Emer-Proof HDPE and HD range of self-adhesive sheet membranes.

Estimating

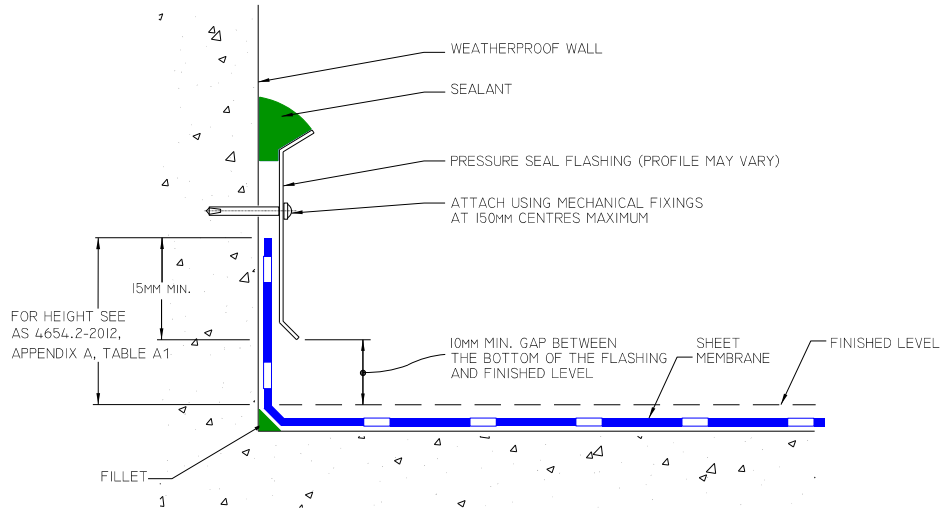
Supply

| | |
|--------------------------------|---|
| Pressure Seal Flashing: | 3 metre lengths 45mm high (total) 2mm thick |
| Product code: | 752016 |



Pressure Seal Flashing

As suppliers of building and civil engineering products Parchem Construction Supplies Pty Ltd do not offer a design service. Information in this drawing is a suggestion only and must not be used for construction except as a signed off drawing by the specifier or contractor



NOTE: FOR FALLS, SEE AS 4654.2 - 2012, CLAUSE 2.5.2

VERTICAL UPWARD TERMINATION – PRESSURE SEAL DETAIL (a)

SCALE: – NTS
 DRAWN BY: – EC
 DATE: – 8/7/10
 LATEST AMENDMENT: – MN
 DATE: – 02/09/13

TSD/W-1SD19 ISSUE NUMBER 3



PARCHEM CONSTRUCTION SUPPLIES
 7 LUCCA ROAD, WYONG
 NSW 2259
 www.parchem.com.au
 1300 737 787

Important notice

A Safety Data Sheet (SDS) and Technical Data Sheet (TDS) are available from the Parchem website or upon request from the nearest Parchem sales office. Read the SDS and TDS carefully prior to use as application or performance data may change from time to time. In emergency, contact any Poisons Information Centre (phone 13 11 26 within Australia) or a doctor for advice.

Product disclaimer

This Technical Data Sheet (TDS) summarises our best knowledge of the product, including how to use and apply the product based on the information available at the time. You should read this TDS carefully and consider the information in the context of how the product will be used, including in conjunction with any other product and the type of surfaces to, and the manner in which, the product will be applied. Our responsibility for products sold is subject to our standard terms and conditions of sale. Parchem does not accept any liability either directly or indirectly for any losses suffered in connection with the use or application of the product whether or not in accordance with any advice, specification, recommendation or information given by it.



Parchem Construction Supplies Pty Ltd
 7 Lucca Road, Wyong NSW 2259
 Phone: 1300 737 787
 www.parchem.com.au
 ABN 80 069 961 968

Distributed in New Zealand by: Concrete Plus Ltd
 23 Watts Rd, Sockburn 8042 Ph: 03 343 0090