

## 'Heat activated' adhesive 3 mm thick waterproofing base sheet membrane

### Uses

Used as a base layer in multi-layer systems. Designed to be applied to heat sensitive substrates such as:

- Thermal insulation
- Timber
- Metals
- Plastics
- PVC and old failed liquid applied membranes

### Advantages

- Index membranes have over 25 years of proven performance throughout Australia
- Specifically selected for Australian conditions
- **Extremely fast to lay / install**
- Cost effective
- Low VOC - 4 grams per Litre
- Handles ponding and permanently wet conditions
- No curing times. Instantly waterproof
- Heat activated adhesive membrane, no need to flame adhere to substrate; base sheet is adhered to substrate by the heat generated by flame-laying of following layer
- Uniform thickness – eliminating likelihood of uneven application possible with liquid applied membranes
- Excellent stability at both high and low temperatures
- Has excellent durability and flexibility
- Polyester fabric composite reinforcement ensures dimensional stability and high strength while maintaining flexibility during application and service

### Description

Autotene Base/P is designed to solve the problem of direct laying over polystyrene foam, without using any nails or glue. It's lower face is coated with a special heat activated adhesive. When the membrane is laid onto the insulation panel - without the silicone film that protects the adhesive coated face, the indirect heat produced by flame-laying of the overlapping layer is sufficient for simultaneous adhesion also of the basic layer in contact with the polystyrene foam. The energy needed for laying one layer, is sufficient for two layers when using Autotene Base/P.

On top of that, the added benefit is also the savings of cutting costs with this type of heat insulation. The lower face is coated with a special hot-melt adhesive mix, containing elastomers and tackiness inducing resins.

The mix is elastic even at low temperatures and is protected by a peelable silicone coated film. Adhesion is heat activated.

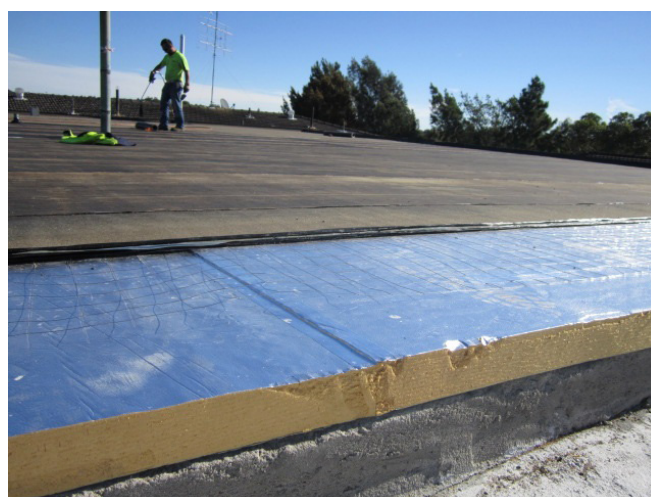
Direct heating generated by flame-laying of the next layer is sufficient for the adhesive coated face to stubbornly stick both to the polystyrene panel on which it rests, and to the overlaps, thus producing long-lasting safe adhesion.

Autotene Base/P will also bond to surfaces such as cement, timber, plastics, PVC, metals and old failed liquid applied membranes.

The Autotene Base/P membrane has a composite non-rotting non-woven polyester fabric reinforcement stabilised with fibre glass.

The top surface of the membrane is sandblasted and has a special edge coated with the same thermally adhesive mixture, protected by a silicone strip, which enables self-sealing of the overlaps.

Autotene Base/P sheet along with following layers (Testudo mineral or Fidia Mineral) may be used for flat and sloping roofs, for roof gradients of more the 15% mechanical fastening elements and /or strips inserted among the layers are necessary. This procedure may also apply to high wind areas.



Index Autotene being installed over insulation panels

## Properties

<b>Product Code:</b>	742011
<b>Reinforcement:</b>	Polyester/glass compound
<b>Thickness of membrane + adhesive (EN 1849/1):</b>	3 mm
<b>Dimensional stability at 100° (EN 1110):</b>	Stable
<b>Flexibility in cold conditions (EN 1109):</b>	-25°C
<b>Tensile strength (L/T) (EN 12311/1):</b>	400/300 N/50 mm
<b>Ultimate elongation (L/T) (EN 12311/1):</b>	40/40%
<b>Tensile strength of joints (EN 12317/1):</b>	>500 N or breakage outside the joint
<b>Resistance to tearing (L/T) (EN 12310/1):</b>	120/120 N
<b>Impermeability to water (EN 1928):</b>	>60 kPa
<b>Peel test on polystyrene foam =20 kg/m<sup>3</sup> (M.I.):</b>	30 N/50 mm

## Specification Clauses

Where so designated on the drawing, the surface shall be covered with a base layer of thermally self-adhesive, composite waterproofing membrane with multilayer composite polymer bitumen and reinforced with non woven polyester that is stabilized with fibreglass mat.

Such a product is Autotene Base/P as supplied by Parchem. Areas shall be prepared and the membrane shall be applied in accordance with the current technical data sheet. All materials used in conjunction with the Autotene Base/P membrane shall be approved by Parchem.

Application of the membrane shall be carried out by a competent applicator, well trained in the application of modified bitumen membrane systems.

For further detailed specifications information refer to the appropriate Waterproofing Specification available from your local Parchem sales office.

## Application Instructions

### Surface preparation

All surfaces to which Autotene Base/P is to be applied must be smooth, free from contaminants and loose material.

Insulation panels shall be fixed to the substrate as per manufacturers' recommendations.

All existing membranes shall have any blisters or wrinkles cut and repaired all as required. Rough or uneven surfaces must be faired up before commencing application.

Contact Parchem for suitable fairing products.

### Priming

Priming of the surface generally is not required including polystyrene foam insulation; however priming of other very porous surfaces may be required. Where required the surface shall be primed with Emer-Proof Self Adhesive Primer at the rate of 6-8m<sup>2</sup> litre. The coverage rate for the primer will vary depending on the porosity of the surface being treated. Allow the primer to dry for at least 15 minutes at temperatures of 25°C and above, and up to 60 minutes when ambient temperatures are approaching 5°C.

Priming should only be carried out on surfaces which will be covered with Autotene Base/P on the same day.

### Application

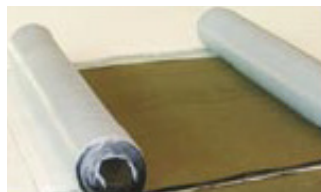
Planning the installation of the membrane is important to ensure joints occur in suitable locations. Autotene Base/P must be laid to allow side laps of 60 mm and end laps of 150 mm.

Application of the membrane should always start from the lowest point on a surface to ensure laps are self-flashing. Apply suitable lengths of Autotene Base/P membrane by first carefully aligning the roll, roll up the membrane and remove the first 300 mm of the release paper and apply to the surface. Pull the remainder of the release paper while unrolling the roll, pressing the adhesive under side of the membrane to the surface.

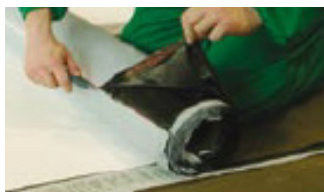
The heat from the following layer being torch bonded will activate and maximise adhesion to surface including the overlap area.

# Index® Autotene Base/P

## Method of use



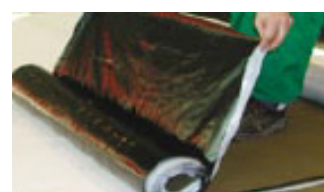
1. Lay Autotene Base on substrate



2. Cut the silicone coated film



3. Remove the silicone coated strip



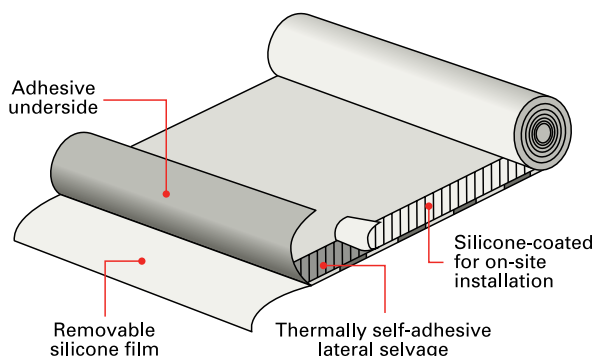
4. Remove the silicone coated film



5. Torch lay the slate coated polymer-bitumen membrane facing upwards on Autotene Base

## Protection

Autotene Base/P has been designed as a base layer and must be used in conjunction with following torch applied membranes.



## Important notice

A Safety Data Sheet (SDS) and Technical Data Sheet (TDS) are available from the Parchem website or upon request from the nearest Parchem sales office. Read the SDS and TDS carefully prior to use as application or performance data may change from time to time. In emergency, contact any Poisons Information Centre (phone 13 11 26 within Australia) or a doctor for advice.

## Product disclaimer

This Technical Data Sheet (TDS) summarises our best knowledge of the product, including how to use and apply the product based on the information available at the time. You should read this TDS carefully and consider the information in the context of how the product will be used, including in conjunction with any other product and the type of surfaces to, and the manner in which, the product will be applied. Our responsibility for products sold is subject to our standard terms and conditions of sale. Parchem does not accept any liability either directly or indirectly for any losses suffered in connection with the use or application of the product whether or not in accordance with any advice, specification, recommendation or information given by it.

## Supply

Autotene Base/P	
Product Code: 742011	1m wide rolls, 10 m long
Emer-Proof Self Adhesive Primer - 6-8m <sup>2</sup> per litre	
Product Code: 742042	4L
Product Code: 742041	20L

## Torch on accessories

Torch on internal corner 90':	PC 744060
Torch on external corner 270':	PC 744040
Torch on bituminous fillet 1100mm:	PC 744050
Torch on drain drop in 80mm:	PC 744080
Torch on drain drop in 100mm:	PC 744070
Torch on pipe detailing collar 40mm > 175mm:	PC 744010
Torch on domed grate 60mm > 120mm:	PC 744090
Torch on spitter 100mm x 65mm:	PC 744020
Torch on one-way vent 60mm:	PC 744030
Torch on two piece one way vent 90mm:	PC 771183
Pressure Seal Flashing 3mtr lengths:	PC 752016
Helastoring – Paver support pad:	PC 771197
Helastoring leveller:	PC 771198