

© This drawing is the copyright of Fosroc Ltd. (modified by permission) and must not be reproduced in any part without prior written permission

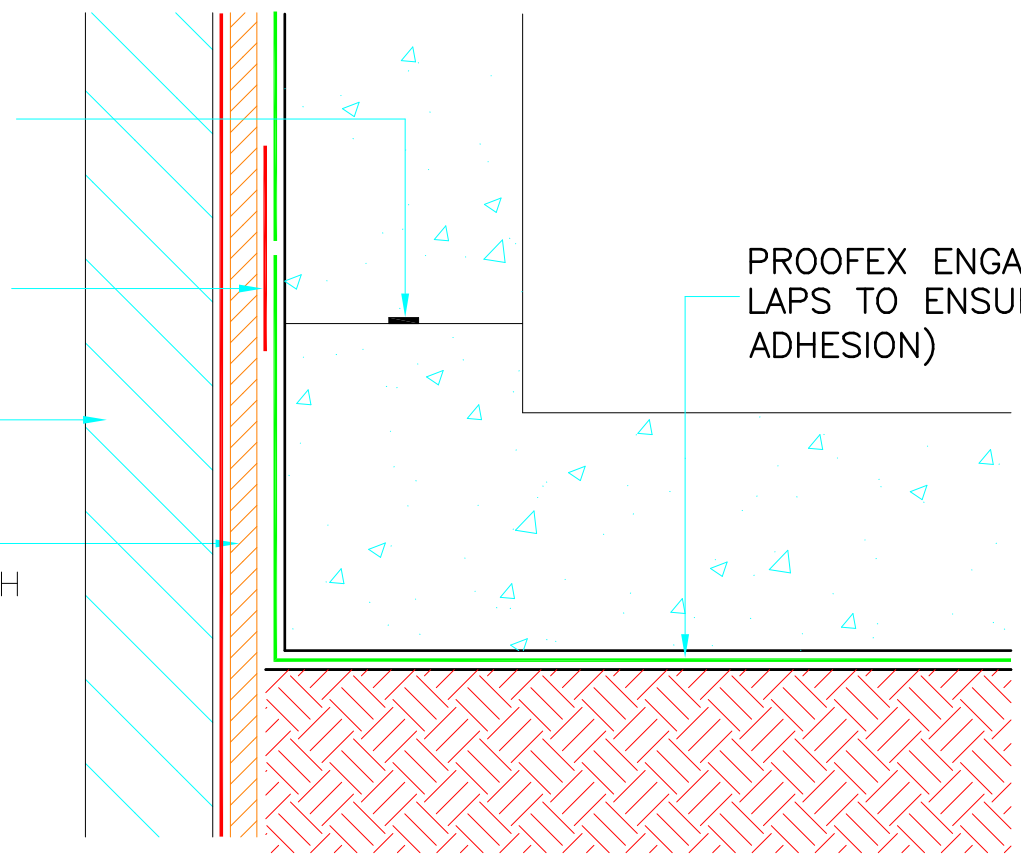
HYDROTITE 1020 ON LEAKMASTER ADHESIVE

PROOFEX DETAIL STRIP

EXISTING STRUCTURE

HYDROCELL STUCK TO EXISTING STRUCTURE WITH DETAIL STRIP

PROOFEX ENGAGE (ROLL LAPS TO ENSURE ADHESION)



AS SUPPLIERS OF BUILDING AND CIVIL ENGINEERING PRODUCTS FOSROC LTD DO NOT OFFER A DESIGN SERVICE. INFORMATION IN THIS DRAWING IS A SUGGESTION ONLY AND MUST NOT BE USED FOR CONSTRUCTION EXCEPT AS A SIGNED OFF DRAWING BY THE SPECIFIER OR CONTRACTOR.

TYPICAL TANKING AGAINST EXISTING STRUCTURE (a)
WITH PROOFEX ENGAGE

SCALE:- NTS
DRAWN BY:- AMC
DATE:- 05-01-01
LATEST AMENDMENT:-
DATE:-

TSD/W-ESD01 | ISSUE NUMBER 2

| | | |
|---|---|--|
|  |  | PARCHEM CONSTRUCTION SUPPLIES 7 LUCCA ROAD, WYONG NSW 2259 |
| | | TECHNICAL: 1800 812 864 SALES: 1800 624 322 |